

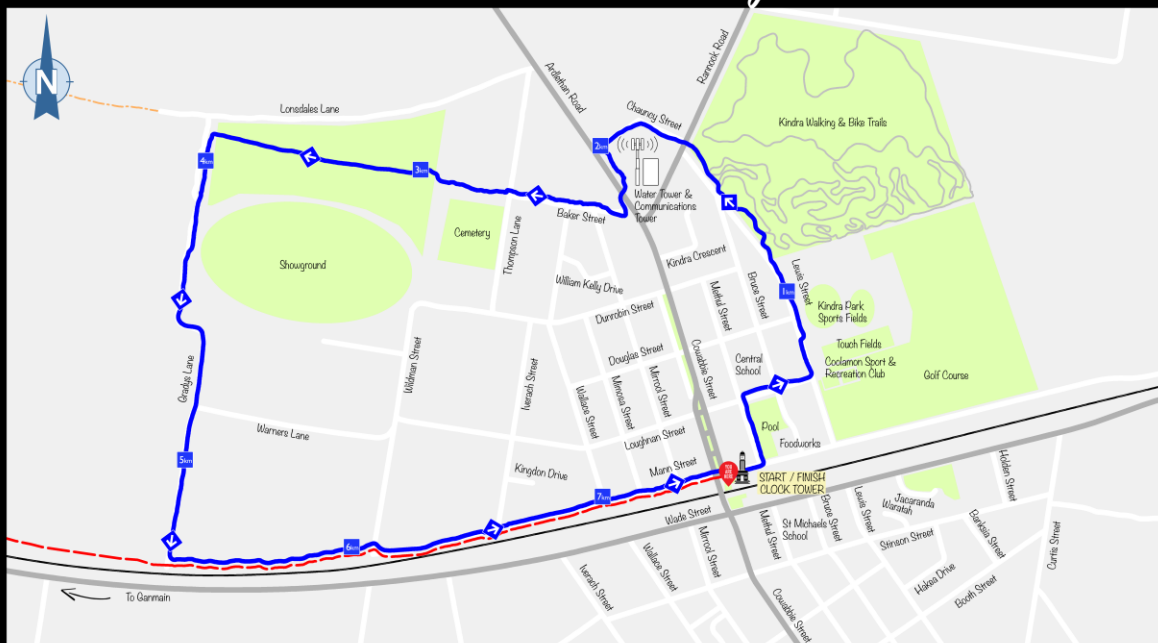


Coolamon Shire Bike and Walking Trails

WWW.VISITCOOLAMONSHIRE.COM.AU
#VISITCOOLAMONSHIRE

Photo credit: @singltrack_matt

Coolamon Urban Walking & Bike Trail (8km)



Conditions of Use

- ✦ This facility exists in a natural environment and usage may be hazardous. Please ensure you exercise caution in undertaking your activity and do not exceed your skill level.
- ✦ Please respect all other users. Do not force a right of way and only pass where safe to do so.
- ✦ All users are to stay on trails.
- ✦ Ensure you have the appropriate level of clothing for your activity. In the case of bike riders, it should be noted that helmets are mandatory.
- ✦ Alterations to existing trails prohibited.
- ✦ All dogs to be kept on leashes. Clean Up After your Dog.
- ✦ Motorbikes (registered or unregistered) and horses are prohibited from using the Gilgai trail.



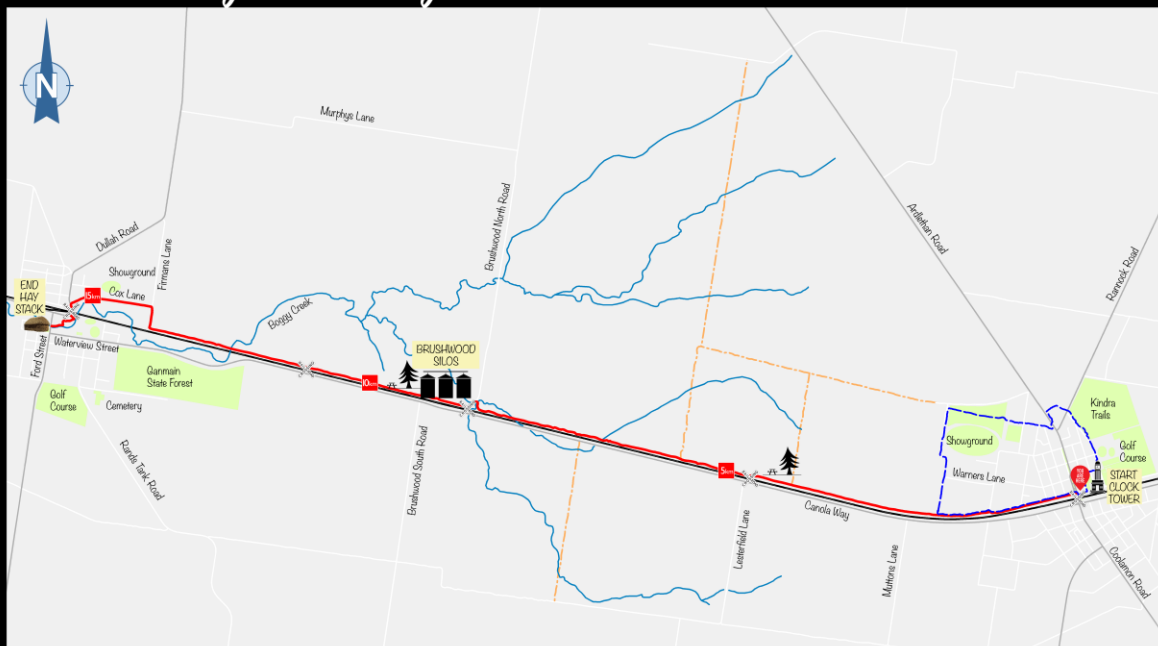
Legend

- Coolamon Urban Walking & Bike Trail
- - - Gilgai Walking & Bike Trail
- Kindra Walking & Bike Trails
- Coolamon - Junee Railway Line
- ◆ Distance Marker in Km
- ◆ Walking & Bike Trail Direction

Project Funded By



Gilgai Walking & Bike Trail - Coolamon to Ganmain (16km)



Conditions of Use

- ✦ This facility exists in a natural environment and usage may be hazardous. Please ensure you exercise caution in undertaking your activity and do not exceed your skill level.
- ✦ Please respect all other users. Do not force a right of way and only pass where safe to do so.
- ✦ All users are to stay on trails.
- ✦ Ensure you have the appropriate level of clothing for your activity. In the case of bike riders, it should be noted that helmets are mandatory.
- ✦ Alterations to existing trails prohibited.
- ✦ All dogs to be kept on leashes. Clean Up after your Dog.
- ✦ Motorbikes (registered or unregistered) and horses are prohibited from using the Gilgai trail.



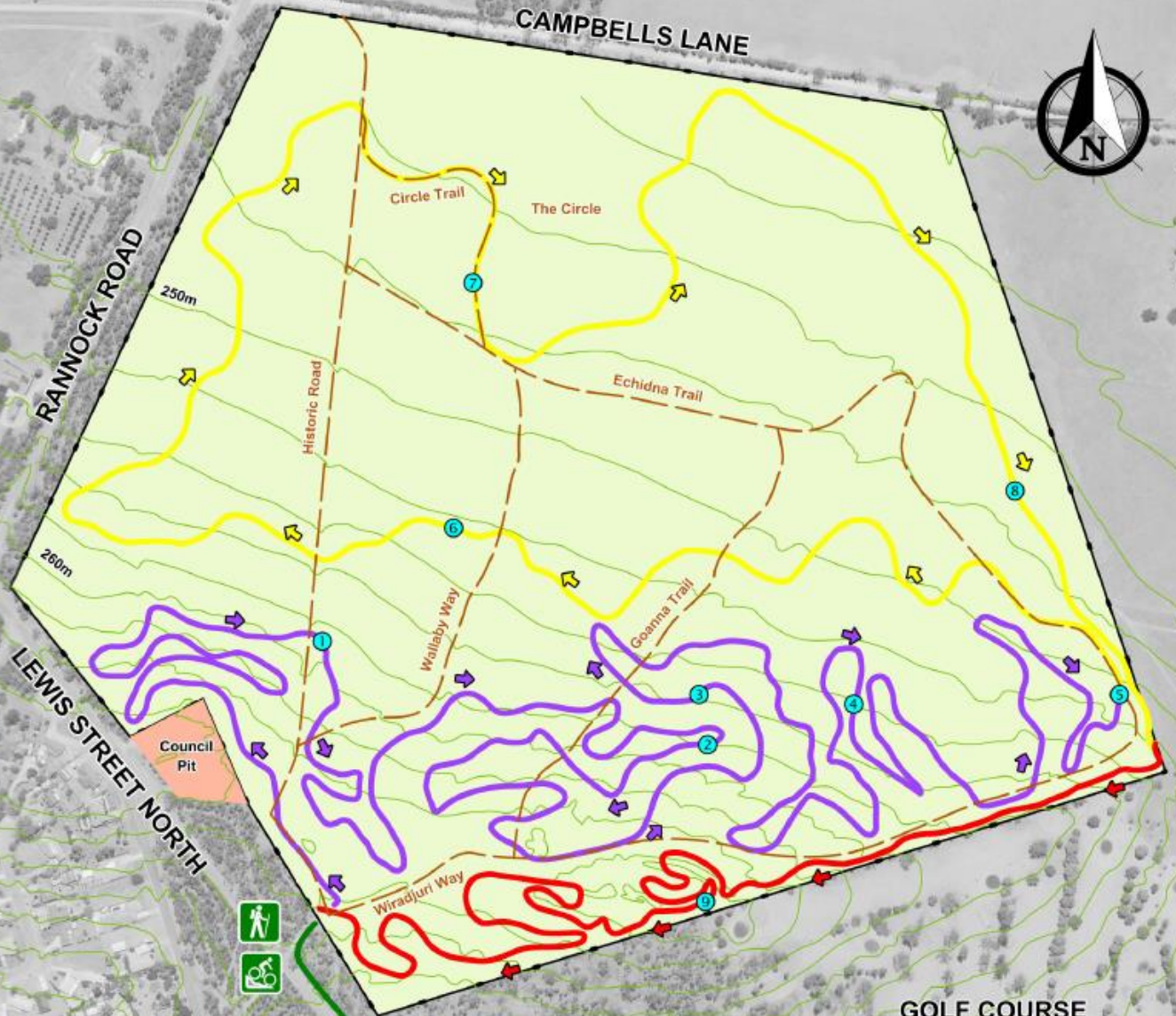
Legend

- Gilgai Walking & Bike Trail
- - - Coolamon Urban Walking & Bike Trail
- Coolamon - Junee Railway Line
- - - Unclassified Road Reserve
- Creeks
- ◆ Distance Marker in Km
- 🌲 Picnic Areas

Project Funded By



Kindra BIKE & WALKING TRAIL



GOLF COURSE

KINDRA PARK



Legend

- Twister - 5.07km
- The Flats - 3.24km
- The Bumps - 1.64km
- Complete Course - 9.95km
- Direction of Track
- Km Markers
- Carpark to Entrance
- Entrance / Start & Finish
- Fire Trails
- 250m
- 2m Contours

Please Phone
Coolamon Shire Council
on 6930 1800
for any enquiries

